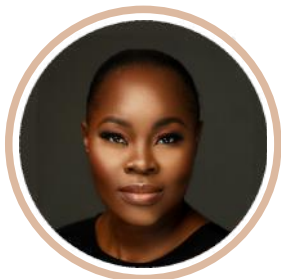


COVID- 19 Response:

How palliative interventions in Nigeria compares with Ghana, Kenya, South Africa, and India



Sola Afolayan
Founder, SHE Foundation



Oluwaseyi Ishola
Researcher, SHE Foundation



Demola Lewis
Advisor, SHE Foundation

info@she.foundation

1. Introduction

Sub-Saharan Africa has not recorded an avalanche of deaths from COVID-19; nonetheless, from the perspectives of economic downturn and plummeting living standards, the region is a disaster in progress. As vulnerable populations are hit by morbid misery, the World Bank (2020) projects a precipitous rise in extreme poverty, especially in Nigeria, which is acclaimed the global poverty capital (OPHI, 2019). As is imperative, governments are offering relief packages to the citizenry and the corporate world. This paper reviews Nigeria's initial response to COVID-19 vis-à-vis four counterpart developing nations: South Africa, Ghana, Kenya and India. This is especially because WHO has predicted that the initial three countries and Nigeria will be the worst hit by the pandemic. Thus, we comparatively assess COVID-19 coping measures by governments with reference to the enforcement of lockdowns, fiscal and monetary policy interventions and the provision of socio-economic palliatives. These include softening of financial policies, lending monetary impetus to the formal and informal sectors, and granting material and financial stimuli to vulnerable populations.

2. Unlocking under Pressure

In Nigeria, there was a 34-day lockdown order by President Buhari on COVID-19 epicentre states Lagos and Ogun, as well as the Federal Capital Territory (FCT). On 22 April, all 36 state governors, aligning with the Federal Government, unanimously barred non-essential interstate travel nationwide for two weeks (Daily Trust, 2020). In spite of these efforts, Nigeria continued to witness a rise in the COVID-19 intensity coupled with a sharp decline in oil price. Despite being so embattled, the Federal Government on 4 May 2020 downgraded the lockdown in Lagos, Ogun and the FCT to a dusk-to-dawn curfew, while still maintaining restrictions on interstate travel.

The easing off, even in the face of an acute curve of infections, was precipitated by the devastating economic consequences of the lockdown on the citizenry, especially those who source livelihood from the informal sector. This was to be expected given that 48% of the 205 million Nigerians lived in extreme poverty (i.e. less than \$1.90/day) prior to the lockdown ([World Poverty, 2020](#)). Thus, in light of stringent finances, small and medium scale entrepreneurs (SMEs) were caught between adhering to the lockdown and succumbing to the exigencies of economic pressure; both of which could equally save or take lives. Says Anietie Ewang, "Millions of Nigerians observing the COVID-19 lockdown lack the food and income that their families need to survive. The government needs to combine public health measures with efforts to prevent the pandemic from destroying the lives and livelihoods of society's poorest and most vulnerable people" ([Human Rights Watch 2020](#)). Indeed, [Mahler et al. \(2020\)](#) estimate that the pandemic will push 23 million sub-Saharan Africans into extreme poverty ([Fig. 1](#)). Going by regional proportions, COVID-19 will force 5 million more Nigerians below the poverty level.



Millions pushed into extreme poverty due to COVID-19

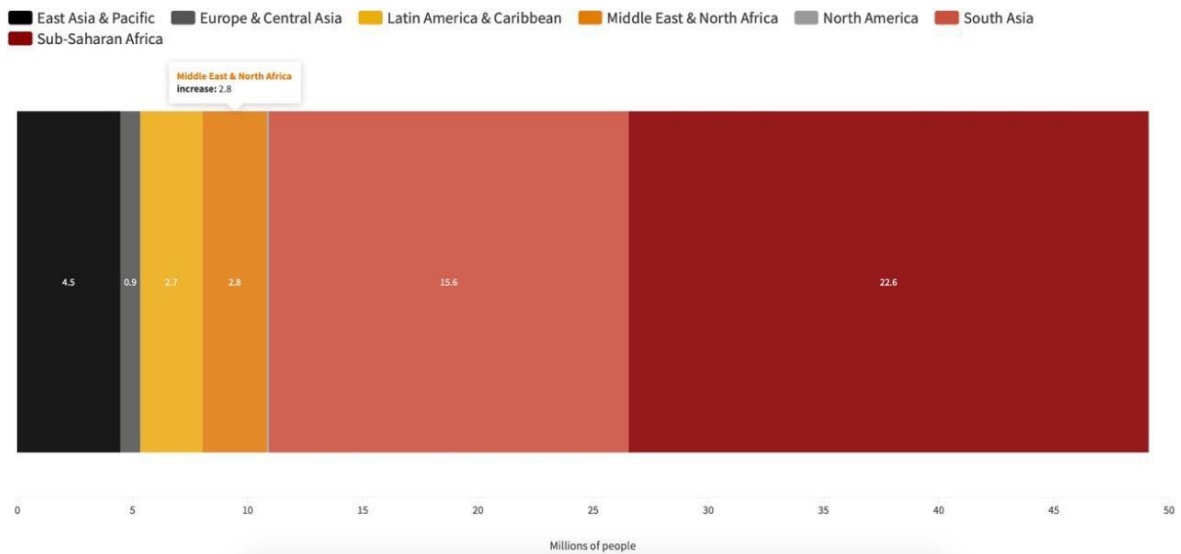


Figure 1: Populations pushed to extreme poverty by COVID-19 (Mahler et al., 2020)

In comparison, India with a population of 1.3bn people, five times that of Nigeria, went into a total lockdown on March 24, 2020 (IMF 2020). A month later, by 23 April, there were 16,686 active COVID-19 cases, with 686 deaths; by April 29, 2020, the infected had nearly doubled with 31,787 confirmed cases and 1008 deaths. As happened in Nigeria, the lockdown was inevitably extended to May 3. Again, contrary to statistics, it had to be eased due to unfavourable economics. This pattern of low lockdown threshold and unlocking under economic pressure has trailed other sub-Saharan African countries like Ghana, Kenya and South Africa. Both Ghana and South Africa however imposed a total lockdown, albeit pressurised to ease it earlier than in Europe and North America. The take home from the inability of developing countries to sustain a lockdown is that, post-COVID-19, these nations ought to boost social security through Universal Basic Income (UBI), as that will vouchsafe subsistence during lockdown. In addition to that, there ought to be an expansive social security database to enable the identification of vulnerable persons who could benefit from more buoyant direct money transfers during lockdown as obtains in economically healthier climes.

3. Measures Aimed at the Formal Sector

As part of efforts to mitigate the adverse effects of COVID-19 on the socio-economic activities of Nigerians, the Federal Government through its MDAs has embarked on several economic stimulus packages. A Presidential Task Force (PTF) was constituted on March 9, 2020 to coordinate Nigeria's multi-faceted inter-governmental efforts towards arresting the spread of the virus and containing the impact on the populace. The PTF was charged with a two-pronged objective to protect the lives of citizens and to preserve the livelihoods of employees and employers of labour (OVPN, 2020).

As an initial response, President Buhari approved a financial injection of ₦15 billion for the



expansion of medical infrastructure (Lagos, ₦10billion and National Centre for Disease Control (NCDC), ₦5billion). Subsequently, he endorsed a fiscal stimulus package of ₦500billion to upgrade health facilities nationwide, facilitate a National Special Public Works Programme, and cater for contingency interventions. The NCDC also received ₦984million and a second tranche of ₦6.5million voted for the purchase of testing kits, the establishment of isolation centres and for the training of personnel (IMF, 2020). The Federal government similarly approved a three-month repayment moratorium (March through May, 2020) for all small scale business loans - TraderMoni, MarketMoni and FarmerMoni – drawn from the Bank of Industry, Bank of Agriculture, and the Nigeria Export Import Bank (Shittu & Co., 2020).

Nigeria's Apex Bank, the Central Bank of Nigeria (CBN), has implemented measures such as adjusting its official exchange rate by 15%; reducing interest rates on all CBN intervention facilities from 9% to 5%; a liquid injection of ₦3.6 trillion (2.4% of GDP) into the banking sector to facilitate credit schemes; and the introduction of a regulatory forbearance for impacted sectors like the Oil & Gas, Agriculture and manufacturing (IMF, 2020).

In addition, the pandemic has elicited some compassionate waivers. The Association of Nigerian Energy Distributors, for instance, pledged that its members will distribute electricity at no cost for two months to all subscribers (ESI Africa, 2020) – though yet to be implemented. The Nigerian Customs Service has also suspended import duty on medical supplies such as personal protective equipment, medicines and allied equipment, till the post-pandemic era. In total, the Federal Government of Nigeria and its MDAs have committed ₦7.8 trillion to combat COVID-19. That is when the piecemeal contributions of different government organs are pieced together. This amounts to 5.2% of Nigeria's GDP.

Individual and private sector contributions constitute another stream of funding for Nigeria's COVID-19 containment efforts. In a wholesome display of benevolence, members of the National Assembly pledged three month's salary (the Lower House) and half of monthly salary till the end of the pandemic (the Upper House) to the PTF. That came after 43 cabinet ministers donated half of their March, 2020 salaries. In similar acts of solidarity, there have been hefty financial and material donations to the PTF towards arresting the pandemic. By 6 April, the Coalition Against COVID-19 (CACOVID) comprising billionaires, companies and celebrities had donated a whopping \$55.7million to combat the virus, not counting property ceded to government to be converted to isolation centres and gifts of ventilators. Though the COCAVID donation is yet the highest from the private sector in the continent (Africa Business, 2020), Nigerians, are however justifiably sceptical that the funds pooled by CACOVID and those injected by the government may not be put to judicious use.

3.1 Counterpart Nations and the Formal Sector

Despite committing 5.2% of her GDP to battle COVID-19, Nigeria has fared less than South Africa, whose government decisively devoted 10% of its GDP (R500billion) to COVID-19



containment (IMF, 2020). This timely and staggering financial commitment coupled with the moral will to enforce a total lockdown are pointers to South Africa's more intentional approach to the war against the invisible virus.

In Ghana, Nigeria's West African rival, the government has committed \$100 million to the COVID-19 combat in the formal sector. Furthermore, a \$210 million dedicated fund was infused into pharmaceutical and medical allied businesses under its Coronavirus Alleviation Program (IMF, 2020). In addition, the government has negotiated a delay of payments of interests valued at GHc1.2 billion (\$268m) on non-marketable domestic bonds issued by public institutions. These measures though similar to are less valuable than the intervention of the Nigerian government in the formal sector. Although, it may be argued that Ghana's interventions are commensurate with the size of her economy, which is six times less than that of Nigeria by sheer GDP projections (World Bank, 2020)

Kenya's initial response to COVID-19 centred around increasing the disposable income available to its citizens by effecting a 100% tax relief for persons earning up to 24,000 Kenyan Shillings (Ksh); decreasing income tax (pay-as-you-earn) and corporate tax for micro, small and medium enterprises by 17% (IMF, 2020) against Nigeria's reduction of the same by 44%. The Kenyan Revenue Authority, however, introduced other unparalleled innovations such as a reduction in value added tax (VAT) from 16% to 14%, as well as a payment of Ksh10 billion of verified VAT claims to enhance cash flow in SMEs (Oderemi, 2020). Furthermore, there was an expedient implementation of the Universal Health Coverage and recruitment of more health care workers to facilitate the control of the COVID-19 pandemic. Again, whereas in Nigeria, it was left to the members of the National Assembly to decide on salary reduction or forfeiture, in Kenya, the government imposed a compulsory but graduated reduction of salaries of public officers: National Executives such as the President and Vice president (80%), Cabinet Secretaries and Chief Administrative Secretaries (30%), and Principal Secretaries (20%) (Oderemi, 2020).

4. Stimuli to the Vulnerable and the Informal Sector

The informal sector remains the most impacted by the Coronavirus plague, worse off in sub-Saharan Africa. In Nigeria, whereas the ravage in the formal sector can be measured and monitored; not so for the informal sector for which there is scarcely any data. Manifestly, there has been greater job security in the formal than the informal sector during the lockdown. A case in point in Nigeria is the leaked retrenchment of 75% of the staff of Access Bank on 30 April 2020 (Afri-Update, 2020). Subsequently, the CBN swiftly issued an order barring banks from laying-off personnel during the pandemic. Soon after, the Access Bank management put out a communiqué denying a retrenchment plan. Such job safeguarding scenarios cannot play out in the informal sector where employees, at the mercy of sole-proprietors, are served verbal sack notices without benefits. Doubtless, due to the pandemic, countless have been laid-off without a trace.

In spite of the paucity of accurate information on the informal sector, The Nigerian



Government has initiated several direct stimulus packages aimed at availing members of the sector with a modicum of necessities to sail through the torrents of the pandemic. Firstly, 70,000 Metric Tonnes of Grain have been released for distribution to poor and vulnerable households across the country. The Conditional Cash Transfers (CCT) has been extended to internally displaced persons, who also received an immediate payment of two month's benefits ([IMF, 2020](#)). Government has also expanded the social register of CCT by 1 million households to 3.6 million beneficiaries to mitigate the effect of the lockdown. Food rations to IDP camps have also been doubled. Likewise, twice there have been reductions in the pump price of petrol, scaling down from ₦145 to ₦123.50 per litre, a decrease of 15%. This measure has however been neutralised by the wanton increase in the cost of basic commodities by opportunistic retailers, which has engendered unbridled inflation. By and large, the Nigerian Government's cushioning of the informal sector has been grossly lean when compared with other developing nations.

4.1 Peers and the Informal Sector

Comparatively, South Africa with a population 60 million, less than a quarter of Nigeria's, had recorded 4,996 COVID-19 positive cases (93 deaths, 2073 recoveries) from 185,497 tests, as of April 29, 2020 ([Worldometer, 2020](#)). The initial mode of response was quite similar to that of Nigeria, except that the South African Government imposed a total lockdown and deployed hi-tech mobile technology contact tracking and tracing. It also manifestly provided a more robust financial succour to the informal sector.

On March 24, the Employment and Labour Minister of South Africa announced an additional economic relief plan for the lockdown by way of cash transfers to the vulnerable valued at \$2.6bn (i.e. 10% of a \$26 billion relief fund). Child welfare benefits were raised from monthly \$23 to \$39 per child. State pensions were boosted, just as government announced that Unemployment Insurance Funds (UIF) would be paid for three months to registered workers of both the formal and informal sectors; and that personnel on emergency services would be provided with personal protective equipment (PPE) and compensated appropriately ([IMF, 2020](#)). The unemployed not captured under the UIF would benefit from a 6-month COVID-19 grant. The UIF guarantees each employee up to R3,500 (\$188) monthly. This is aside from a National Disaster Benefit dedicated to relieve the ordeal of employee layoffs, from which beneficiaries could withdraw up to R17,712 (\$950) monthly ([Oderemi, 2020](#)). Furthermore, small businesses would receive loans at a prime interest rate of 5%, to enable a cash bailout for employees during the lockdown. In addition, the Department of Tourism allocated R200 million to support tourism businesses with turnover of less than R2.5 million per year ([IMF, 2020](#)). Nigeria has not tapped from the contributory pension scheme to recompense workers, let alone compensate the hospitality industry.

Certainly, the South African response to the informal sector has been more targeted and proactive than that of Nigeria. This can be ascribed to pre-existing social security structures, which made it possible to identify and consolidate ailing aspects of the informal sector, and to ensure that stimuli get to the intended vulnerable population.



As for Ghana, GH¢280 million is being used to finance food for vulnerable groups and free water for three months - April, May and June 2020 (BBC, 2020). To further address the effect of the COVID-19 pandemic on vulnerable persons, the government has committed to defray the electricity bills of one million active users, as well as grant a 50% subsidy on electricity bills to other citizens in the months of April through June. The electricity intervention is valued at GH¢1.02 billion (\$172m). Apart from the aforementioned, the Disaster Management reached out to about 470,000 families located in the slums of Kumasi and Accra with dry food packs (CNBC, 2020). Nothing like the scepticism and dissatisfaction expressed by Nigerians, the Ghanaian citizenry attests to the salutary impact of these direct interventions by government.

Beyond Africa, India's approach has been quite analogous to that of Nigeria. It includes relief packages in-kind (free food rations) and cash transfers to lower-income households and low-wage workers done through the public distribution scheme, amounting to approximately 0.8% of India's GDP. The Finance Minister also announced a grant of Rs5 million to support medical insurance for health care workers. In Nigeria, however, the frontline workers had to demand for such benefits before they were promised. Employees who contribute to the employees provident fund organization will be allowed to withdraw 75% of their account balance or 3 months basic salary – whichever is lower ([KPMG Insights, 2020](#)). As already alluded, Nigeria should take a cue from this last measure by exploring the possibility of withdrawals from contributory pension schemes during extreme conditions such as the COVID-19 pandemic.

5. Conclusion: A lot of Catching Up to Do

The effort by the government of Nigeria to tackle the existential threat posed by the COVID-19 pandemic appears to be disjointed. There is little or no synergy among Federal Ministries and Parastals in ensuring a coordinated response; just as the nation's economic stimulus packages appear to be targeted more at the formal sector. This is in contrast with the proposals of Human Right Watch (2020). Considered alone, Lagos State with the highest incidence - 844 cases as at April 28, 2020 - has about 65% of its estimated 25 million people working in the informal sector. Unlike other developing countries, which have specifically targeted the poor in form of cash transfers, complete or partial absorption of utility bills such as electricity and water, and direct injection of funds into SMEs, Nigeria's approach has been of more rhetoric than reality. If corrective paths are abandoned, COVID-19 will further establish Nigeria as the poverty centre of sub-Saharan Africa. The general consensus is that the Nigerian Government's response has been slow and sloppy. Indeed, but for the proactive efforts of the Lagos State Government, which the Federal has rested heavily on, there would have been a dismal COVID-19 catastrophe sweeping across Nigeria. A tightened resolve should include the following suggestions, a few of which are adapted from Price Water Corporation (2020)

- i. Introduction of a strategy that would harmonize the response of Federal, State and



Local governments. A coordinated effort is likely to create the greatest impact in the shortest time and at the lowest cost.

- ii. There is a dire need to articulate and communicate to the public a well-thought-out economic relief plan for the teeming masses. It is not too late to be firm about a nation-wide lockdown and the mandatory use of face masks. Only, to support these measures, there has to be a transparent means by which food relief gets to the intended. There must be an audit system for the deliverables, through audiovisual feedback.
- iii. The government needs to expand its reach to ensure that no vulnerable person is left behind in the CCT programme. As things stand now, the number of recipients is just as ridiculous as the amount received. It is grossly inadequate for a country with over 90 million persons living in extreme poverty to place only 3.6 million on the CCT scheme. Government ought also to provide clear terms of eligibility. Even at that, the CCT should be implemented in the short term. Ultimately, Nigeria should adopt a realistic Universal Basic Income policy.
- iv. There should be a tangible effort by Government to stimulate the local production of PPE, especially for frontline workers, who should also be placed on augmented salaries and life insurance during the pandemic.
- v. The Government has to put out a formal research call for home-grown solutions to the COVID-19 pandemic. The current spate of verbal calls seems merely political, as there are no modalities, no specified technical reviewing organisations to which research applications could be directed.
- vi. Aside from researching a cure, attention should be paid to the development of a national multidimensional poverty index that does not only identify vulnerable communities, but provides useful information on targeted areas of need such as water and electricity. This will facilitate the delivery of community customized support with greater impact.
- vii. A fiscal modelling tool should also be established to track economic and financial conditions such as oil prices, GDP and rate of unemployment. This will provide a proactive template for addressing prospective impacts of disruptions like pandemics on vulnerable groups.
- viii. Coming behind education, the health sector ought to be prioritised by Government. First of which must be the primary health sector. Rather than run the primary health centres, Government should lease them to private practitioners (Afolayan, 2020);



while creating incentives like zero duties on medical shipments and favourably low taxation on medical facilities. The health insurance scheme needs also to be expanded to capture the informal sector.

The end is far from sight, as there is a festering of community spread especially in northern Nigeria, just as Lagos is still under the weight of soaring infections. Nigeria must realise that COVID-19 cannot be wished away; rather, to ward off the virus, she must wake up to the discipline and coordination of counterpart countries like South Africa and Ghana.



PALLIATIVES BY THE FEDERAL MINISTRY, PARASTATALS AND STATE GOVERNMENTS IN NIGERIA

Central Bank of Nigeria

N50 billion credit facility, coupled with N100 billion credit to support the health sector

Short Term

→ Healthcare and Formal Sector



Emergency funds of N984 million (\$2.7 million) have been released to Nigeria's Center for Disease Control.

Mid Term

→ Covid-19 patients and frontline health Care workers



Grant of N10 billion for SMEs

Long Term

→ Frontline workers in Lagos and SME



Reduction in interest rates from 9 to 5 percent

Long Term

→ Formal Sector



Liquidity injection of 3.6 trillion into the banking sector

Long Term

→ Formal Sector



Infusion of N2 trillion for manufacturing industries and 1.5 trillion for the real estate sector Center for Disease

Short Term

→ Manufacturers and Real estate businesses



Infusion of N120 billion from a private sector initiative

Short Term

→ Formal Sector



Exchange rate adjusted by 15 percent

Short Term

→ Formal Sector



Credit support for healthcare industry

Short Term

→ Hospitals, Healthcare practitioners, pharmaceutical companies; drug manufacturing plants



The Presidency

N500 billion Covid-19 intervention fund

Long Term



Formal and informal sector



Ministry of Humanitarian and Social Welfare

An increase of the social register to 3.6 million households

Cash distribution for selected persons

Short Term



Beneficiaries of national social programme



Ministry of Agriculture and Rural Development

Release of 7000 metric tons of food items

Short Term



Selected states



Federal Inland Revenue Service

Reduction on companies Income Tax by 50 percent

Short Term



Formal and Informal sector



Ministry of Power

Received N200m to boost gas supplies and power generation nationwide

Short Term



Active electricity users



Two month free electricity



Active electricity users



Ministry of Trade and Investments

A three-month repayment moratorium for all TraderMoni, MarketMoni and FarmerMoni loans.

Short Term

→ Farmers, traders and local market owners



FGN Ministry of Humanitarian Affairs and Disaster Management

Conditional Cash Transfer (3.6 million persons) - Social Investment Program and Food Distribution

Short Term

→ Vulnerable groups earning daily wages and are resident in Lagos and Abuja



National Assembly

Donation of its 3-month Salaries to combat the spread of COVID-19.

Short Term

→ Front line health workers



The Lagos State Government

Free health care services in all its tertiary health institutions

Short Term

→ Residents of Lagos state



Nigerian National Petroleum Corporation

Reduction of petrol pump price from N145 to N123.50

Mid Term

→ General Populace



Nigerian Custom service

Wavier on import duty related to medical supplies

Short Term



Importers of Medical Equipment



Lagos State Internal Revenue Service

Extension of deadline for filing personal income tax returns by 2 months

Short Term



Businesses



www.she.foundation



COVID-19 PALLIATIVES IN OTHER COUNTRIES

Ethiopia

Central Bank

Debt restructuring

15 billion birr for additional liquidity is provided to private banks to aid in debt restructuring and prevent bankruptcies

→ Private Banks



Medium Term

Ghana

Ministry of Health

Health insurance

Healthcare professionals and ancillary staff are provided with insurance coverage of up to \$60,000 for death and \$4,300 for critical illness

→ Healthcare professionals and ancillary staff



Medium Term

Coronavirus Alleviation Programme

US \$210 million support

The government committed US \$210 million to promote industries supplying COVID-19 drugs and equipment, to support SMEs and employment, and the creation of guarantees and first-loss instruments. Funds have also been designated to address availability of test kits, pharmaceuticals, equipment, and bed capacity

→ Pharmaceutical sector, SMEs



Immediate

Government

Interest payment suspension

An agreement has been reached between the government and investors to postpone interest payment on non-marketable domestic bonds held by public institutions to create more available funds of about GHc 1.2 billions in the financial sector

→ Public institutions



Immediate

Monetary Policy Committee

Policy rate cut

The committee cut the policy rate by 150 basis points to 14.5 percent and announced plans to mitigate the impact of the pandemic - lowering the primary reserve requirement from 10 to 8 percent, lowering the capital conservation buffer from 3 to 1.5 percent, revising provisioning and classification rules for specific loan categories, and plans to facilitate and lower the cost of mobile payments

Medium Term

 shefoundationng



India

Ministry of Finance

INR 1.7 trillion relief package

In-kind and cash transfers; insurance coverage; wage support

Short Term



Lower-income households; healthcare workers; low-wage workers



Reserve Bank of India

Foreign exchange swap

FX swap of \$2billion dollars for 6 months; limit of FPI investment increased to 15 percent of outstanding stock for Fiscal year 2020/2021; restriction on non-resident investment in specified securities issued by the CBN has been removed; Foreign direct investment policy now requires government approval on investments by every country that shares a land border with India

Medium Term

Ministry of Corporate Affairs

Loan repayment moratorium

No late fees for late filing during moratorium period

150 billion rupees

Support for health infrastructure which includes testing facilities, personal protective equipment, isolation beds, ICU beds and ventilators



Healthcare



State Government

Direct transfers

Free food rations and cash transfers

Immediate



Lower-income households



Ministry of External Affairs

Visa extensions

Foreign nationals who were stranded in India due to the lockdown, and whose visas expired between February 01 and April 30, 2020, were granted automatic extensions till April 30; exit of such foreign nationals was also granted without overstay penalty

Immediate



Foreign nationals



Kenya

National Executive

Voluntary salary cuts

President, Deputy president will receive 80 percent cut; Cabinet secretaries will take a 30 percent cut; Chief administrative secretaries a 30 percent cut and Principal secretaries, 20 percent cut

Immediate



Senior ranks of the national executive



 shefoundationng



National Treasury

Tax relief

Full income percent tax relief for persons earning a gross monthly income of up to 24,000 Kenyan shillings; reduction of income tax rate from 30 to 25 percent; reduction of resident income tax from 30 to 25 percent; reduction of the turnover tax rate from three to one percent for MSMEs

Short Term

Tax relief

VAT reduction from 16 to 14 percent effective April 1st, 2020

Immediate

Revenue Authority

VAT refunds

payment of all VAT refund claims amounting to Ksh. 10billion → Businesses

should be expedited within three weeks, or alternatively, should allow for offsetting Withholding VAR in order to improve cash flow for businesses



Immediate

Credit Reference Bureau

Loan repayment moratorium

Temporary suspension of listing of any person, MSMEs and corporate entities whose loan accounts fall overdue or is in areas, effective 1st April 2020 → Micro, Small and Medium Enterprises and Corporate entities



Short Term

Ministry of Labour and Social Protection

Cash transfers

Ksh 10billion to support vulnerable members of the society → Elderly, orphans and other vulnerable households

to cushion against adverse economic effects of the pandemic



Central Bank

Tax relief

Policy rate is lowered from 8.25 percent to 7.25 allowing commercial banks lower their interest rates to borrowers; Lowered cash reserve ratio from 5.25 to 4.25 percent, providing additional liquidity of Ksh. 35 billion to commercial banks ; increased maximum tenor of repurchase agreements from 28 to 91days; providing banks with flexibility on loan classification and provisioning for loans performed before March 2, 2020 → Commercial banks



Short Term

Counties governors

Waive collection of cess levies on food items

In response to the criticisms of the measures and suggestions to include food items, counties governors decided to waive collection of cess levies on food items → Farmers



 shefoundationng

South Africa

Ministry of Labour and Employment

Economic relief plan - \$26bn

In addition to the already existing economic stimulus packages, the government activated the extant frameworks; \$2.6bn of the money will be given in the form of cash transfers to the most vulnerable population; People receiving child benefit - currently \$23/child per month will receive an extra \$16; state pensions will be boosted and those who currently aren't receiving any benefits could qualify for \$18/month for the next six months

→ Population



Medium Term

National Disaster fund

Unemployment Insurance Fund benefits will be paid for 3 months to registered workers; Also, those in emergency services will be compensated and will be equipped with protective gears and other safety materials

→ Government workers



Short Term

COVID-19 Grant

Unemployed workers that do not receive UIF grants will be also be covered under the 6-month COVI-19 grant

→ Unemployed workers



Medium Term

Department of Small Business Development

Financial intervention strategies - 500million Rands

Small businesses will receive loans at a prime interest rate of 5% to assist their businesses and their employees with cash bailouts during the lockdown

→ Small businesses



Short Term

Department of Tourism

Financial intervention strategies - 200million Rands

Allocated budget will support eligible small businesses with turnover of less than R2.5 million per year mitigate the impact of the pandemic

→ Small tourism businesses



Medium Term

Tax measures

Businesses with a turnover of less than 50million Rands have been given a four-month skills development tax holiday, and can delay one-fifth of their tax based on 'pay as you earn' as well as delay a portion of their provisional and income tax for 6 months without penalties

→ Businesses



Short Term

South Africa Reserve Bank

Policy rate cut

The central bank reduced the policy rate to 5.25 percent on March 19 and then 4.25 percent on April 14; It also announced plans to ease liquidity conditions

→ Commercial banks



Medium Term



www.she.foundation



References

- Aljazeera, (2020). Countries with confirmed cases of coronavirus. *Aljazeera* 8 May 2020. Available at: <https://www.aljazeera.com/news/2020/01/countries-confirmed-cases-coronavirus-200125070959786.html>. (Accessed: 8 May 2020).
- BBC, (2020). *Ghana government announce free water, 3 month tax holiday give health workers den 50% basic salary give frontline COVID-19 workers*. Available at: <https://www.bbc.com/pidgin/tori-52179929>. (Accessed: 27 April 2020).
- Afolayan, S. (2020). As the Numbers Climb, Nigeria Heading for COVID-19 Catastrophe. *The Crest* 4 May 2020. Available at: <https://thecrestng.com/2020/04/27>. (Accessed: 4 May 2020).
- Busari, S. (2020). *Nigerian citizen: I prefer to die from COVID-19 than hunger*. Interview, CNN, Lagos. Available at: <https://edition.cnn.com/videos/world/2020/04/21/nigeria-africa-coronavirus-covid-19-lockdown-restrictions-livelihood-busari-lkl-intl-ldn-vpx.cnn/video/playlists/coronavirus-intl/>. (Accessed: 25 April 2020).
- CNBC, (2020). *Ghana lifts lockdown on key regions as COVID-19 cases reach 1,042*. Available at: <https://www.cnbc.com/news/2020/04/20/ghana-lifts-lockdown-on-key-regions-as-covid-19-cases-reach-1042/>. (Accessed: 25 April 2020).
- Daily Trust, (2020). Nigeria: Governors Agree On 14 Days National COVID-19 Lockdown. *Daly Trust* 31 march 2020. Available at: <https://allafrica.com/stories/202003310013.html>. (Accessed: 9 May 2020).



ESI Africa, (2020). *Nigeria pledges free electricity supply nationwide for two months*. Africa Power Journal. Available at: <https://www.esi-africa.com/industry-sectors/transmission-and-distribution/nigeria-pledges-free-electricity-supply-nationwide-for-two-months/>. (Accessed: 11 May 2020).

Human Rights Watch, (2020). *Nigeria: Protect Most Vulnerable in COVID-19 Response*. Available at: <https://www.hrw.org/news/2020/04/14/nigeria-protect-most-vulnerable-covid-19-response>. (Accessed: 25 April 2020).

Ikeyi, N., Shittu, T. & Orjiat, S. 2020. *Nigerian governments' initial measures and palliatives to businesses in the wake of COVID-19 pandemic*. Available at: <https://iclg.com/briefing/11546-nigerian-governments-initial-measures-and-palliatives-to-businesses-in-the-wake-of-covid-19-pandemic>. (Accessed: 25 April 2020).

International Monetary Fund, (2020). *Policy Responses to COVID-19*. International Monetary Fund, Washington. Available at: <https://www.imf.org/en/Topics/imf-and-covid19/Policy-Responses-to-COVID-19#N>. (Accessed: 26 April 2020).

International Monetary fund, (2020). *IMF Executive Board approves a US\$1 billion disbursement to Ghana to address the COVID-19 Pandemic 13 April, 2020*. Available at: <https://www.imf.org/en/News/Articles/2020/04/13/pr20153-ghana-imf-executive-board-approves-a-us-1-billion-disbursement-to-ghana-to-address-covid-19>. (Accessed: 12 may 2020).

KPMG Insights, (2020). *Government and institution measures in response to COVID-19*. KPMG Insights, India. Available at:



<https://home.kpmg/xx/en/home/insights/2020/04/india-government-and-institution-measures-in-response-to-covid.html>. (Accessed: 25 April 2020).

Mahler, D. G., Lakner, C & Aguilar, R. C., (2020). *The impact of COVID-19 (Coronavirus) on global poverty: Why Sub-Saharan Africa might be the region hardest hit*. Data Blog, World Bank Group. Available at:

<https://blogs.worldbank.org/opendata/impact-covid-19-coronavirus-global-poverty-why-sub-saharan-africa-might-be-region-hardest>. (Accessed: 26 April 2020).

National Assembly of Nigeria, (2020). Available at: <https://www.nassnig.org/>.

National Bureau of Statistics, (2020). *Fourth Quarter Gross Domestic Product Report 2019*.

Available at: [https://nigerianstat.gov.ng/elibrary?queries\[search\]=GDP](https://nigerianstat.gov.ng/elibrary?queries[search]=GDP).

(Accessed: 27 April 2020).

Nigeria Centre for Disease Control, (2020). *An update of COVID-19 outbreak in Nigeria*, electronic dataset. Available at:

<https://ncdc.gov.ng/diseases/sitreps/?cat=14&name=An%20update%20of%20COVID-19%20outbreak%20in%20Nigeria>. (Accessed: 25 April 2020).

Oderemi (2020). *COVID-19: What Manner of Palliatives? ...OPS Seeks Answer*. Available at:

<https://tribuneonlineng.com/covid-19-what-manner-of-palliatives-ops-seeks-answer/>

Office of the Vice President of the Federal Republic of Nigeria (OVPN), (2020).

<https://www.yemiosinbajo.ng/>

Oxford Poverty and Human Development Initiative. (2019) *Global Multidimensional*

Poverty Index. Oxford Poverty and Human Development Initiative, University of



Oxford [Online]. Available at: https://ophi.org.uk/wp-content/uploads/G-MPI_Report_2019_PDF.pdf. (Accessed: 4 April 2020).

Price Water Corporation (PWC), (2020). *COVID-19: Economic Implication and policy responses*. Available at: <https://www.pwc.com/ng/en/assets/pdf/Covid-19-economic-implications-webinar-presentation.pdf>. (Accessed: 28 April 2020).

The State House, (2020). *Government Palliatives*. Nigeria: The State House. Available at: <https://statehouse.gov.ng/press-office/>. (Accessed: 26 April 2020).

World Data Lab, (2020). *People in the world living in extreme poverty*. Electronic dataset, World Data Lab. Available at: <https://www.worldpoverty.io>. (Accessed 25 April 2020).

World Health Organization, (2020). *WHO Director-General's opening remarks at the media briefing on COVID-19 11 March 2020*. Available at: <https://www.who.int/dg/speeches/detail/who-director-general-s-opening-remarks-at-the-media-briefing-on-covid-1911-march-2020>. (Accessed: 20 April 2020).

Worldometer, (2020). India Population. *Worldometer*. Available at: [www.worldometers.info > world-population > india-po...](http://www.worldometers.info/world-population/india-population/) (Accessed: 9 May 2020).

Africa Business Magazine (2020) Nigerian private sector donates more than most other African countries in fight against COVID-19. Available at: <https://africanbusinessmagazine.com/sectors/health-sectors/covid-19/nigerian-private-sector-donates-more-than-most-other-african-countries-in-fight-against-covid-19/>. (Accessed: 11 May 2020).



Afri-Update (2020). Nobody Asked You To Donate 1Billion To FG, Nigerians React As 75% Of
Access Bank Staff Face Sack. Available at:
<https://www.afriupdate.com/news/nobody-asked-you-to-donate-1billion-to-fg-nigerians-react-as-75-of-access-bank-staff-face-sack/>. (Accessed: 11 May 2020).

